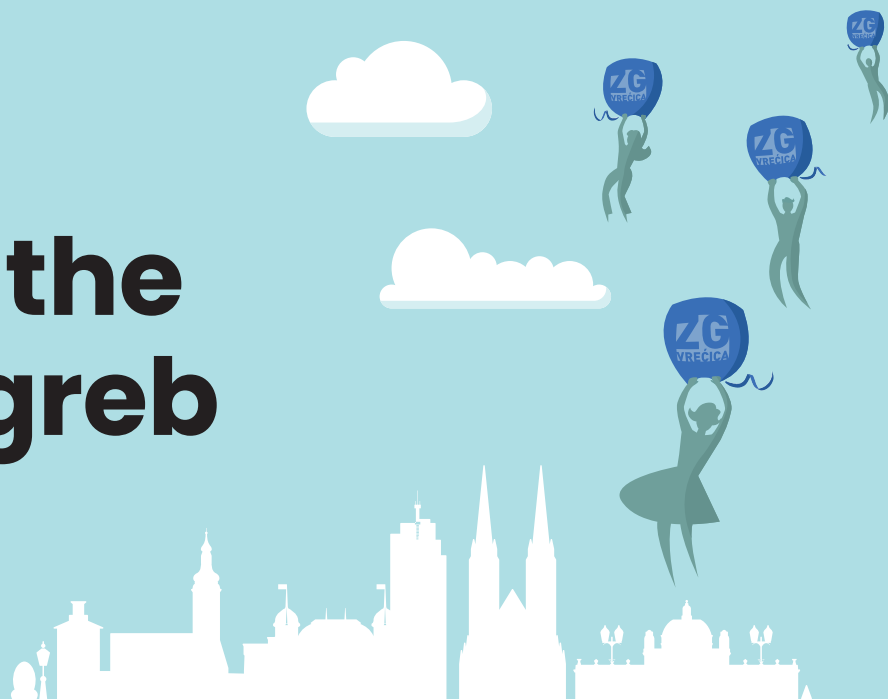
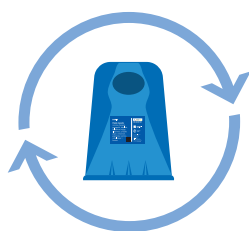


# Waste Sorting in the City of Zagreb

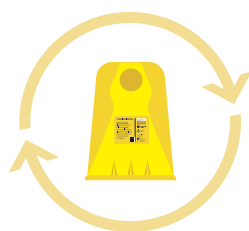
## INFORMATION FOR TOURISTS



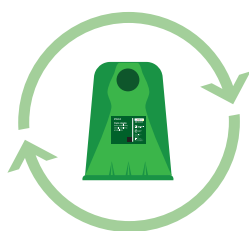
In Zagreb, waste is deposited in separate containers:



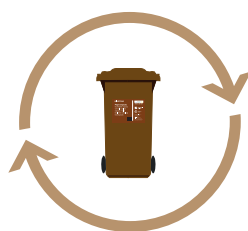
**PAPER**  
in blue containers



**PLASTIC AND METAL**  
in yellow containers



**GLASS**  
in green containers



**BIOWASTE**  
in brown containers



**MIXED MUNICIPAL WASTE**  
disposed of in  
standardised blue ZG bags

Tenants of the buildings located in the centre of Zagreb must abide by the following rule (a list of streets in the City centre can be found at <https://zgvrecice.cistoca.hr>):

Containers located **inside buildings** (in lobbies or any other common areas), may be carried out for waste disposal purposes **only between 8.00 p.m. and 10 p.m. every day except on Sundays**, and must be returned inside the building at the latest by 8 o'clock on the following morning.

For containers **not located inside buildings** (in lobbies or any other common living areas): ZG bags containing mixed municipal waste are to be placed at the entrance to the building **only between 8.00 p.m. and 10 p.m. every day except on Sundays**.

Disposing of ZG bags outside of the allocated hours is punishable.

For any questions please contact your host or contact us at [zgvrecice@zgh.hr](mailto:zgvrecice@zgh.hr) or +385 (0)1 6189 779

## PAPER – blue containers

- Newspapers, magazines, leaflets, catalogues
- Notebooks, books, picture books, address books
- Printer and computer paper, letters, office printed material, paper bags
- Folders, cardboard manila folders, corrugated cardboard, cardboard boxes (*without adhesive tape, plastic, styrofoam, etc.*)
- Decorative tape made from paper

### The following is NOT TO BE DEPOSITED in paper containers:

- Carbon paper, photographs and photo paper, oily and dirty paper, food stained paper, multilayer packaging, plastic coated paper, plastic coated paper glasses, used paper plates and glasses, gummed labels, self adhesive tape, stickers, plastic and metal coated paper, carbon paper – **mixed municipal waste**
- Cartons – **plastic and metal container**
- Paper tissues, napkins – **biowaste container**

## PLASTIC AND METAL – yellow containers

- polyethylene bags, protective plastic packaging (*e.g. toilet paper packaging*), foil, film, bubble wrap – may be marked with the following symbols: PE-HD, PE-LD, PET, PP etc.
- edible oil bottles, distilled water bottles, cleaning product bottles, cosmetics bottles, medication bottles (*except cytotoxic drugs*), foodstuff
- bottles, etc. – may be marked with the following symbols: PE-HD, PE-LD, PP, etc.
- plastic household bowls, plastic glasses and yoghurt containers, cheese containers etc. – may be marked with the following symbols: PS, PP, etc.
- polystyrene foam (*styrofoam*) packaging used to make foodstuff liners – may be marked with the symbol EPS etc.
- multilayer packaging (*cartons*)
- other products made of plastic: soft drink bottles, caps, plastic plates and cutlery, plastic straws etc. – may be marked with the following symbols: PE-HD, PP, PVC, PS, PET, etc.
- food tins, beverage cans
- plastic CD and DVD packaging
- plastic toys containing no other materials
- candy and crisp packaging etc.

### The following is NOT TO BE DEPOSITED in plastic and metal containers:

- plastic packaging and cans containing remnants of paint, varnish and motor oil or remnants of chemicals, bottles and cans for flammable and explosive liquids, pressurised cylinders and cans such as propane/butane cylinders, CDs, DVDs, vinyl records, cables, umbrellas – **recycling yard**

### Throw in a cap for expensive medicines

All kinds of plastic caps and lids found on water bottles, juices, milk, yoghurt, cheeses, detergents, fabric softeners, oils etc, can be separated because, once separated, they can be recycled and turned into a useful new product. In this way you can support the “**Throw in a cap for expensive medicines**” humanitarian action organised by the Association of Leukaemia and Lymphoma Patients.

## GLASS – green containers

- Glass packaging without bottle caps and/or other plastic or metal parts

### The following is NOT TO BE DEPOSITED in glass containers:

- Window glass, car glass, lead crystal and optical glass, reinforced glass, laboratory glassware, glass wool, light bulbs and fluorescent lamps, porcelain and ceramic objects – **recycling yard**

## BIOWASTE – brown containers

- Kitchen waste (*fruit and vegetable scraps and peels, eggshells, coffee grounds, teabags, leftover bread, raw leaves of lettuce, cabbage, chard, etc.*)
- Garden or green waste (*wilted flowers, twigs, fallen leaves, grass and hedge clippings, pot soil, etc.*)
- Small quantities of other biowaste (*tree bark, hair, sawdust, paper tissues, napkins, pine needles, small quantities of non plastic coated and non metal coated paper used for wrapping kitchen scraps*)

### The following is NOT TO BE DEPOSITED in biowaste containers:

- Scraps of heat treated food: bones, meat, fish, skin, fat, animal faeces, ash, litter for pets, nappies, sanitary towels, biowaste that has been in contact with oil, gasoline, oil paints and primers and pesticides, cigarettes, cigarette butts – **mixed municipal waste**
- Hazardous waste, medicine, painted and lacquered wood waste, clothes – **recycling yard**

## MIXED MUNICIPAL WASTE – ZG bags

- Vacuum cleaner bags
- Toilet paper, wet wipes
- Dirty or coated wax paper (*e.g. paper towels, butcher paper, baking paper*)
- Shopping receipts printed on thermal paper
- Carbon paper, stickers, roll film, photographs
- Packaging unsuitable for recycling (*e.g. multilayer toothpaste packaging*)
- Paper coated with plastic or metal (*e.g. plastic coated paper cups*)
- Sponges, nappies, sanitary towels, cotton wool
- scraps of heat treated food (*meat, fish, boiled vegetables*) and bones
- Small toys, cigarette butts, shaving razors
- Excrement and litter for pets

### The following is NOT TO BE DEPOSITED in mixed municipal waste bags:

- Glass packaging – **glass container**
- Metal and plastic packaging, milk and drinks in – **cartons plastic and metal container**
- Electric and electronic devices with the corresponding accessories (*e.g. cables*), bulky, metal and construction waste, rocks, hazardous waste: fluorescent light bulbs, energy saving light bulbs, varnishes, solvents, batteries, car batteries etc. – **recycling yard**
- Earth, tree branches and mown grass – **biowaste container**